

Domain: Green Building Certification | EPC Contracting & Interior fit-outs Energy Metering Solutions


Real Estate Sector

 Commercial
 Residential
 Hotels & Healthcare

Industries

 Process Units
 Manufacturing units

Energy Sector

 Policy Framework
 Energy Efficiency Tools

Products

 Pre-Paid Meters
 Gridsynch
 Telesynch & HEMS

Services: Green Building Certification | Daylight & Solar Analysis | Energy Simulation | CFD Simulation

Achievements:

- Experience Working on more than 250 projects in India, New Zealand, South Korea, Bangladesh, Vietnam, UAE and Nepal
- 46 no. of projects completed with certification level more than or equal to GOLD or 4 Star from IGBC/GRIHA/LEED/NZBC

Key advantages with GreenTree:

- Global Presence
- Experience working in 7 countries
- Diverse team consisting of Architects and Engineers (Mechanical, Civil, Electrical and Environmental)
- Quality and Timely Handover

Simulation Tools:

- Energy: eQUEST, IES and Design Builder
- Daylight: ECOTECT, IES, Daysim, Radiance
- CFD: IES, Ansys
- Revit

EPC Contracting & Interior Fit-Outs | Smart Energy Meters

EPC Contracting & Interior Fit-Outs

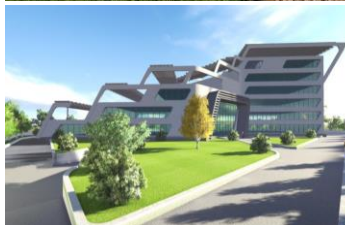

Turnkey services from project design, to execution which includes, conceptual and detailed design, procurement, construction, commissioning and handover of buildings, factories and solar projects.

Dual Source Prepaid Meter – 3 ϕ & 1 ϕ

Key Features,

- AMI Integration Prepayment meter
- Identify DG and GRID power consumption separately
- Multiple Tariff with TOU and Partial Loads, fixed charges
- 12month token, recharge history

250 Projects (International & Domestic) | 7 Countries Experience



A Few Renowned Clientele